

# OLIMPIADI DELLE NEUROSCIENZE

2012



## TAVOLE PER LE PROVE DI ANATOMIA

### Avvertenze:

Nelle schede delle competizioni, alcuni nomi saranno sostituiti da rettangoli vuoti, altri saranno cancellati. I rettangoli vuoti dovranno essere riempiti con i nomi appropriati, come quelli presenti in queste tavole.

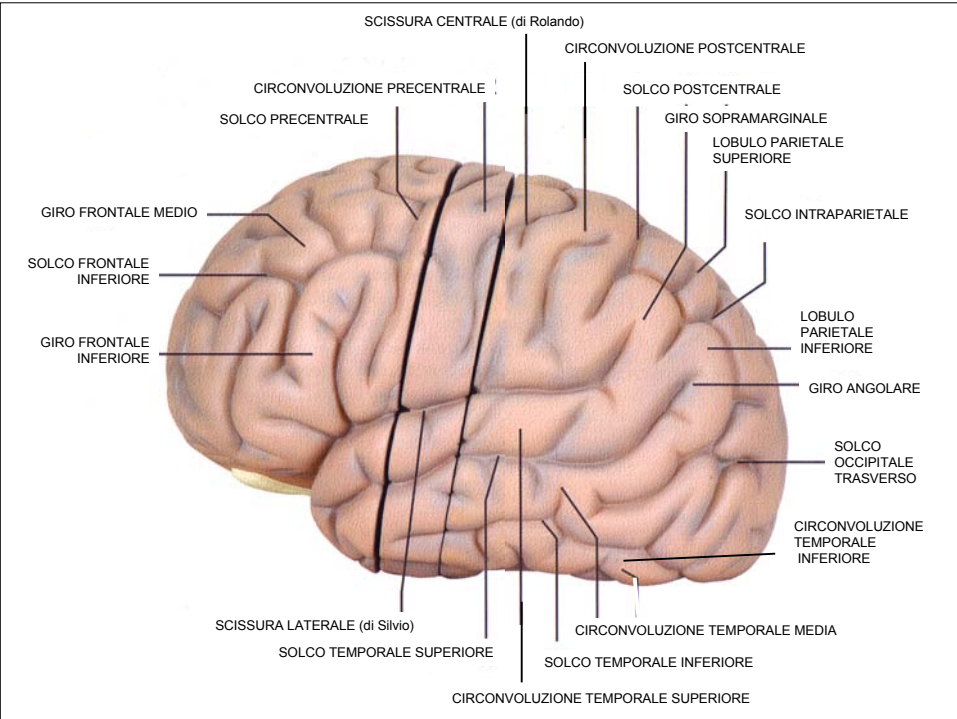
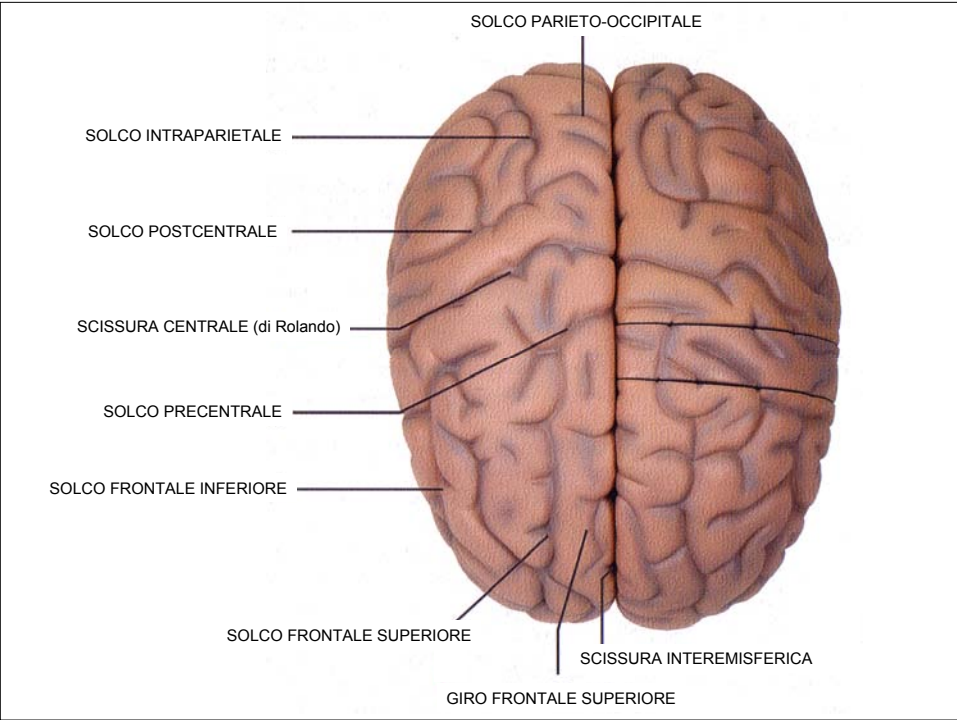
Gli inserti fotografici (schede 9, 12 e 16) sono forniti per ragioni di studio, allo scopo di dare un'idea precisa della realtà anatomica; ma non verranno utilizzati nelle competizioni.

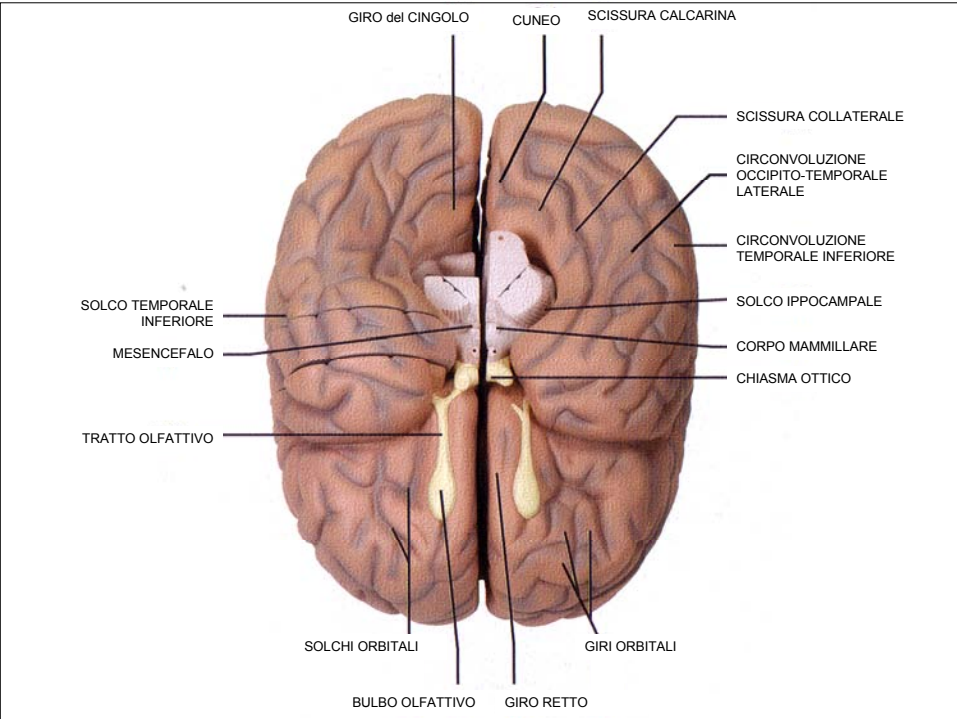
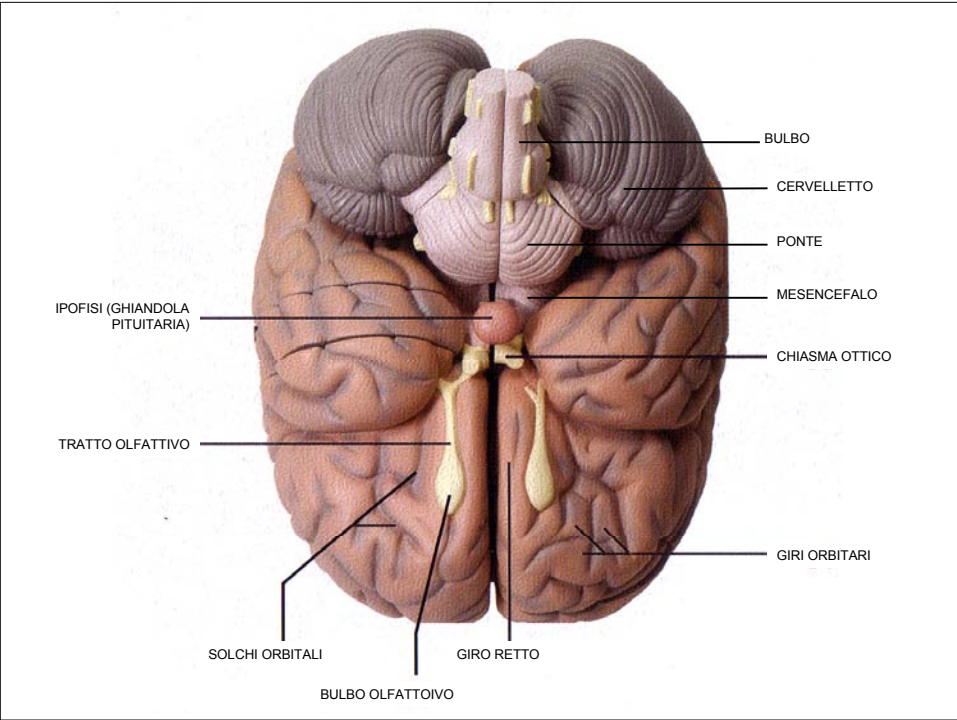
Potranno essere usati sinonimi, purché appropriati. Ad esempio: nucleo abenulare = abenula.

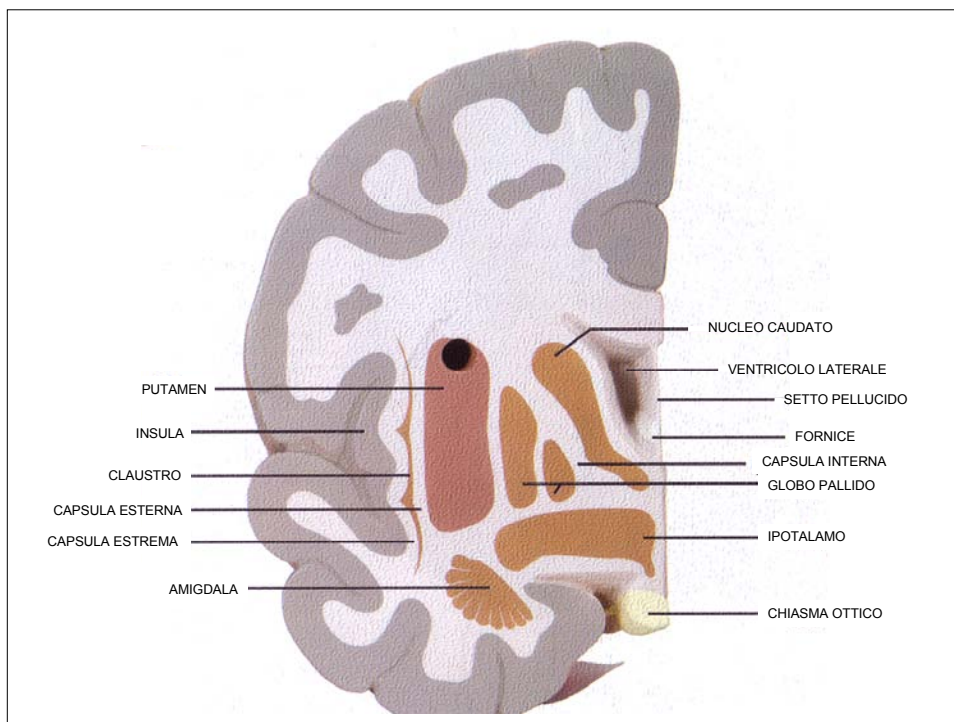
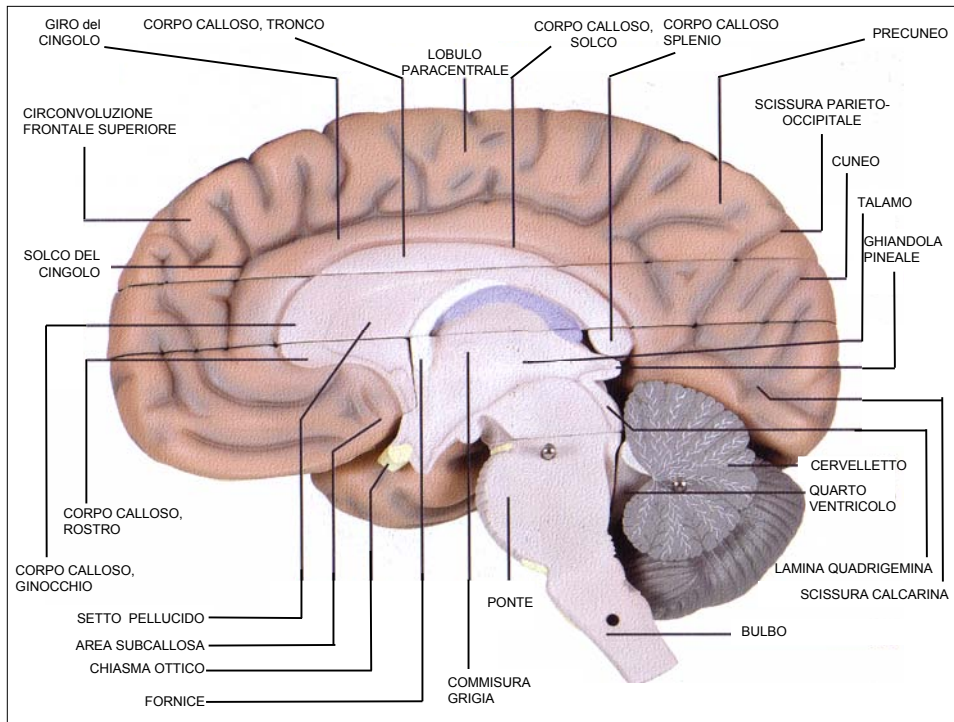
Potrà essere utilizzata terminologia in latino. Ad es.: globo pallido = globus pallidus.

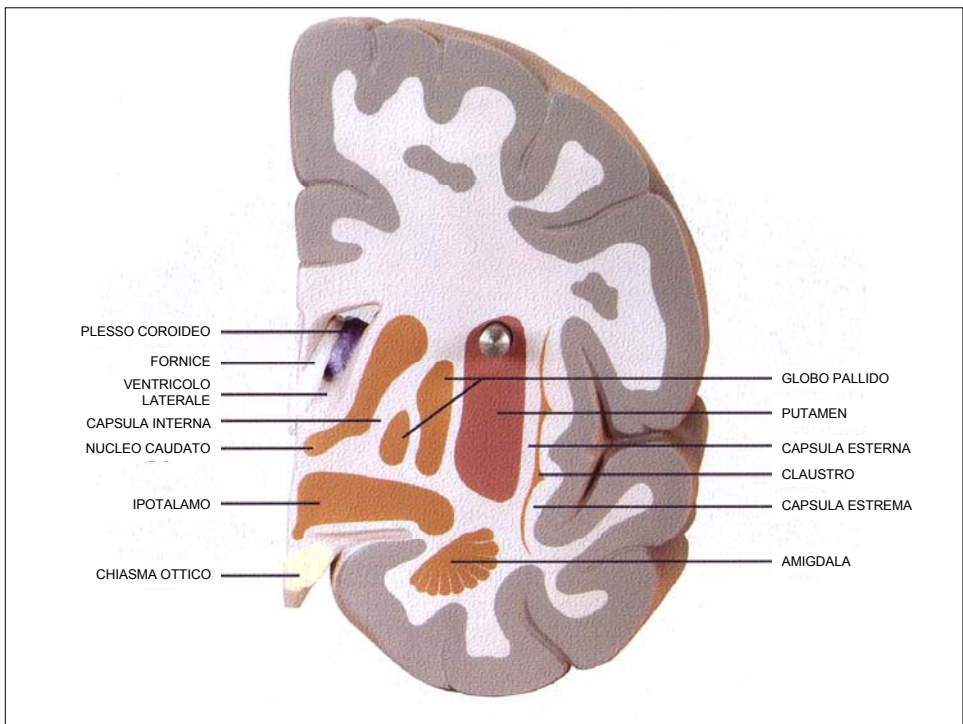
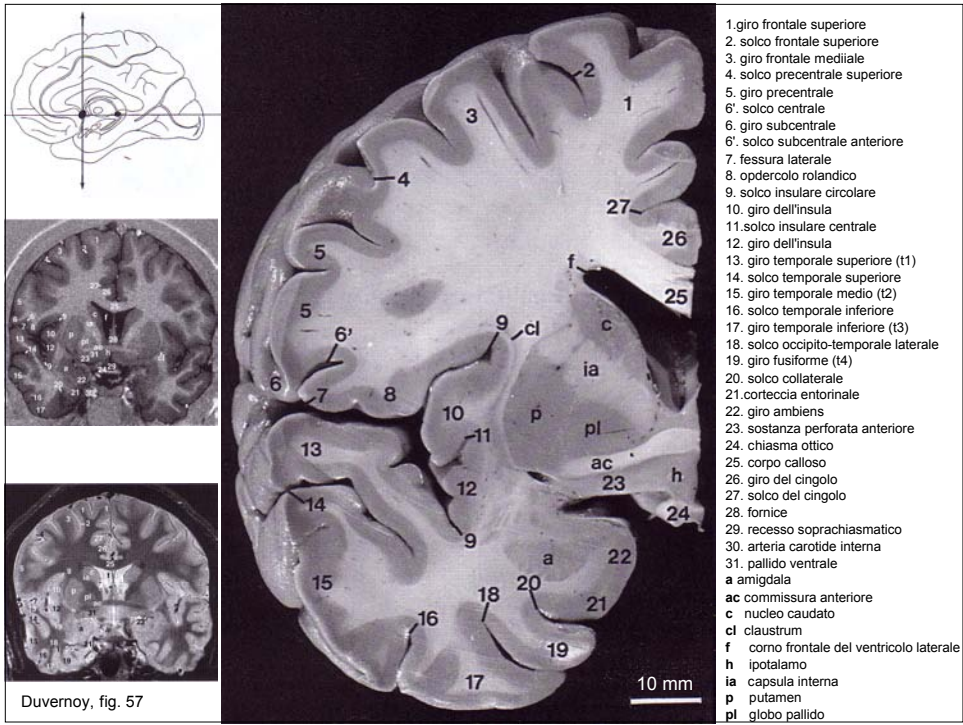
Quando una struttura ne comprende un'altra, bisognerà riportare il nome presente nelle schede. Ad es.: il segnale che indica il lobulo parietale superiore potrebbe indicare anche il lobo parietale o il cervello. Poiché nelle schede è indicato il lobulo parietale superiore, sarà questo il nome che dovrà essere utilizzato.

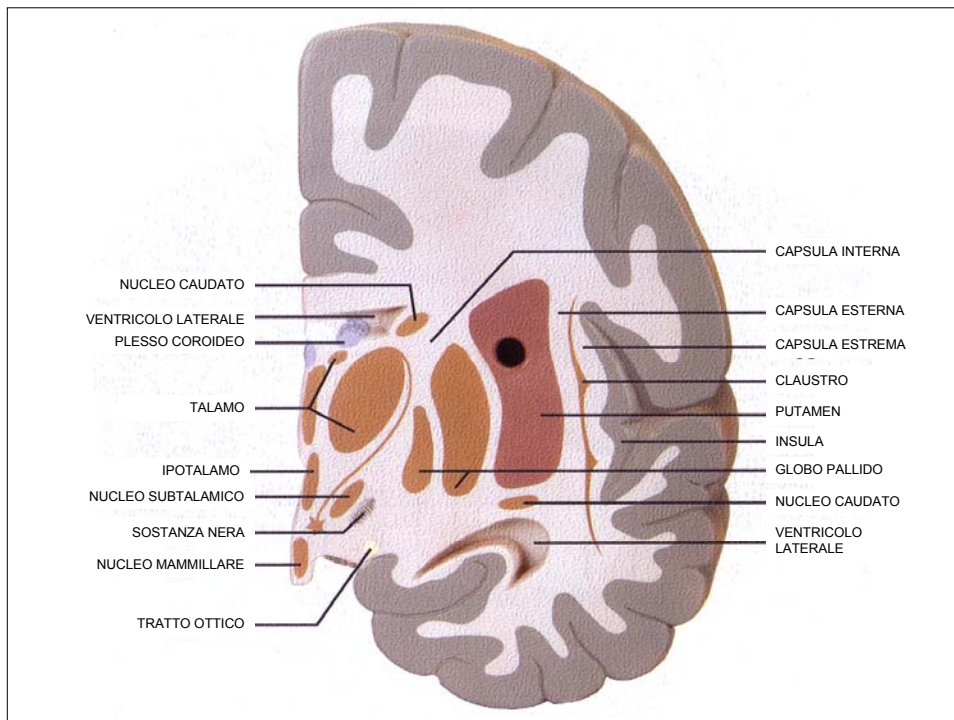
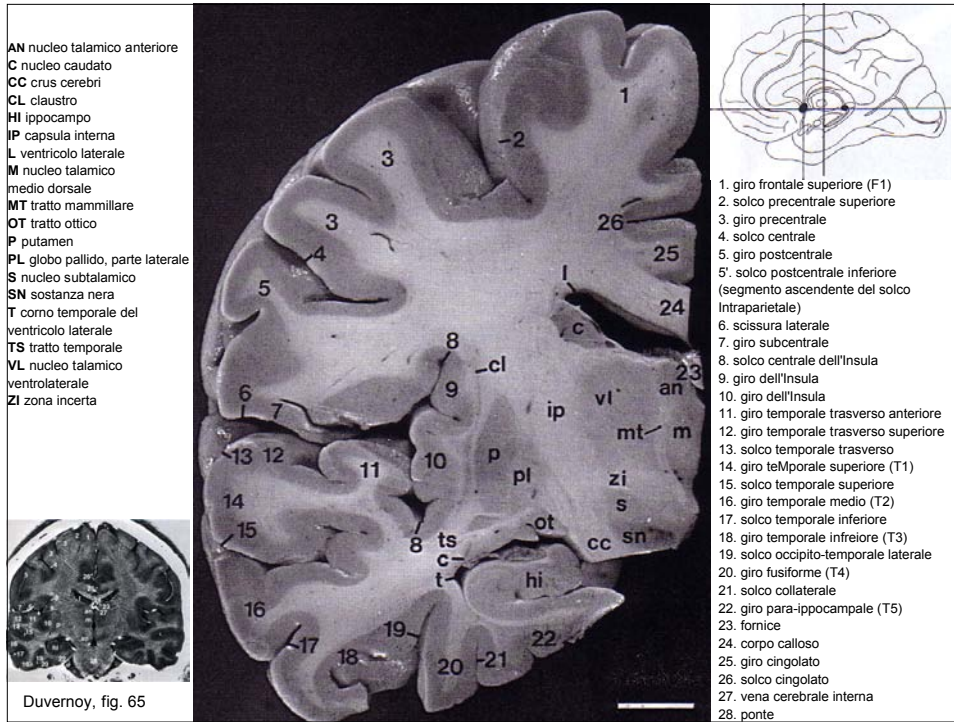
Equivoci o controversie verranno risolti dalla giuria, il cui parere sarà definitivo e inappellabile.

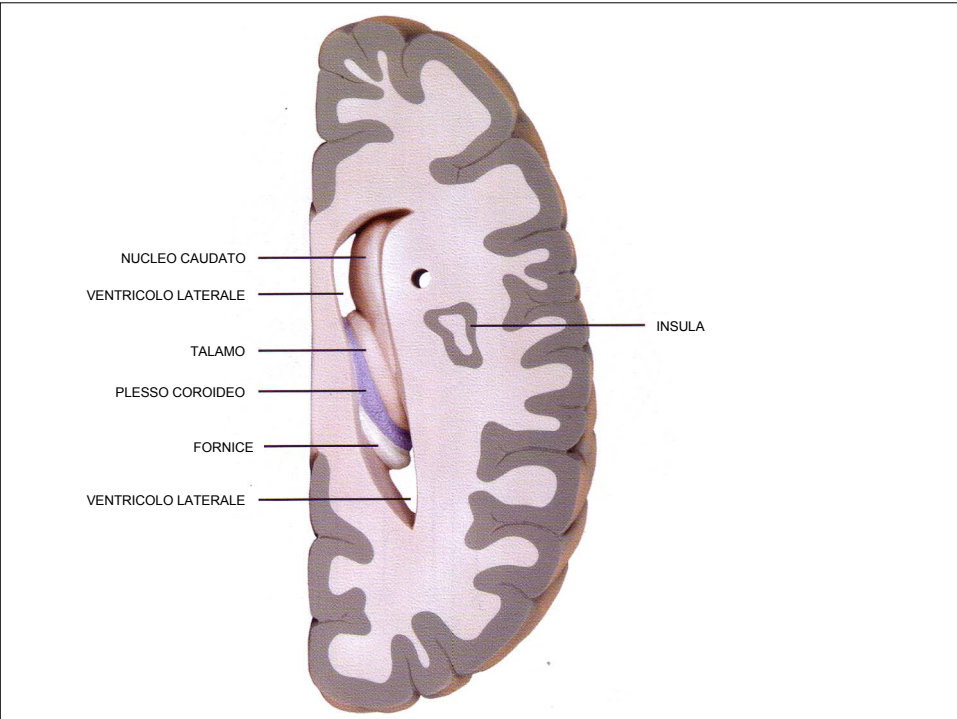
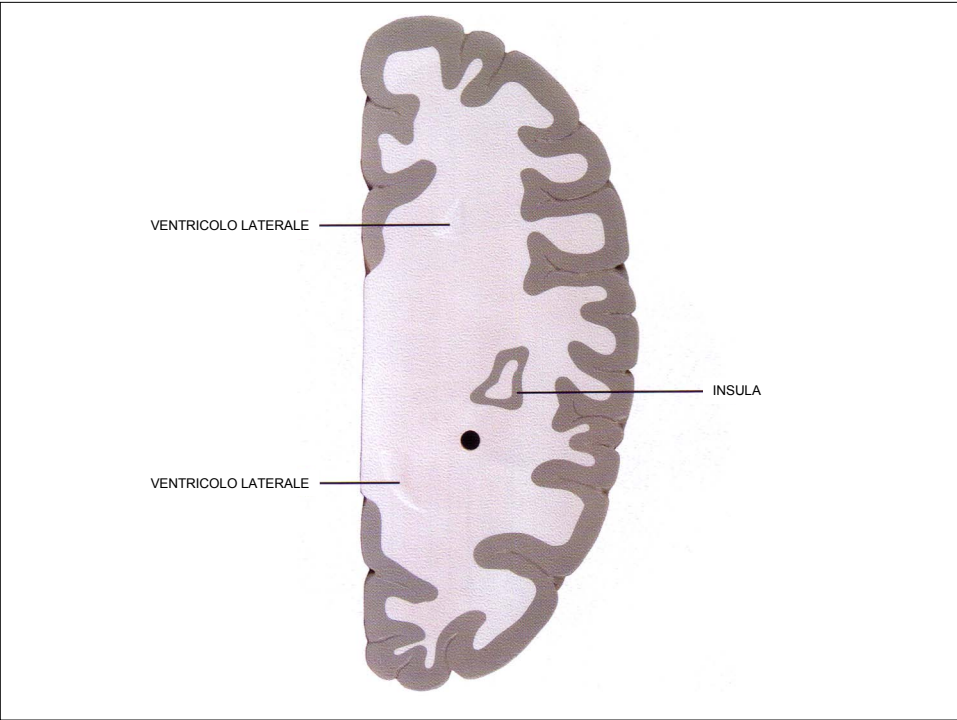


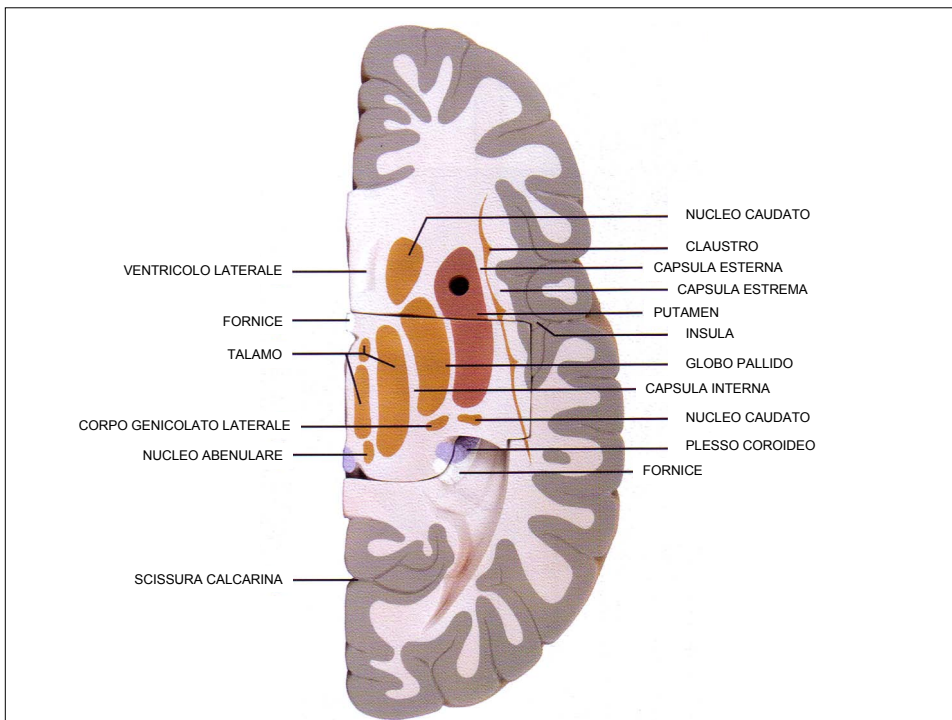
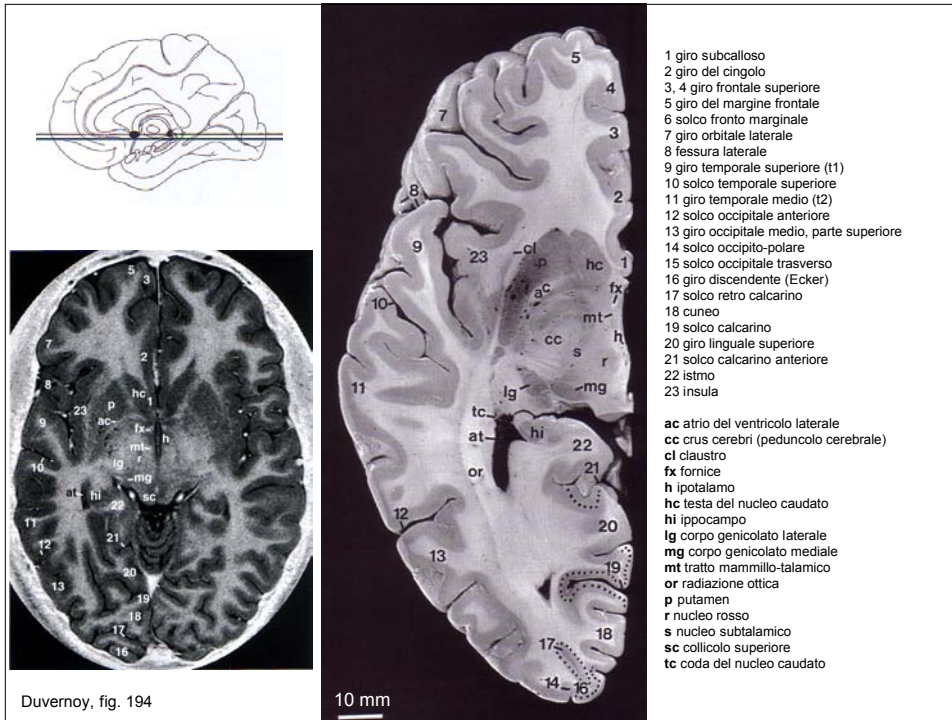


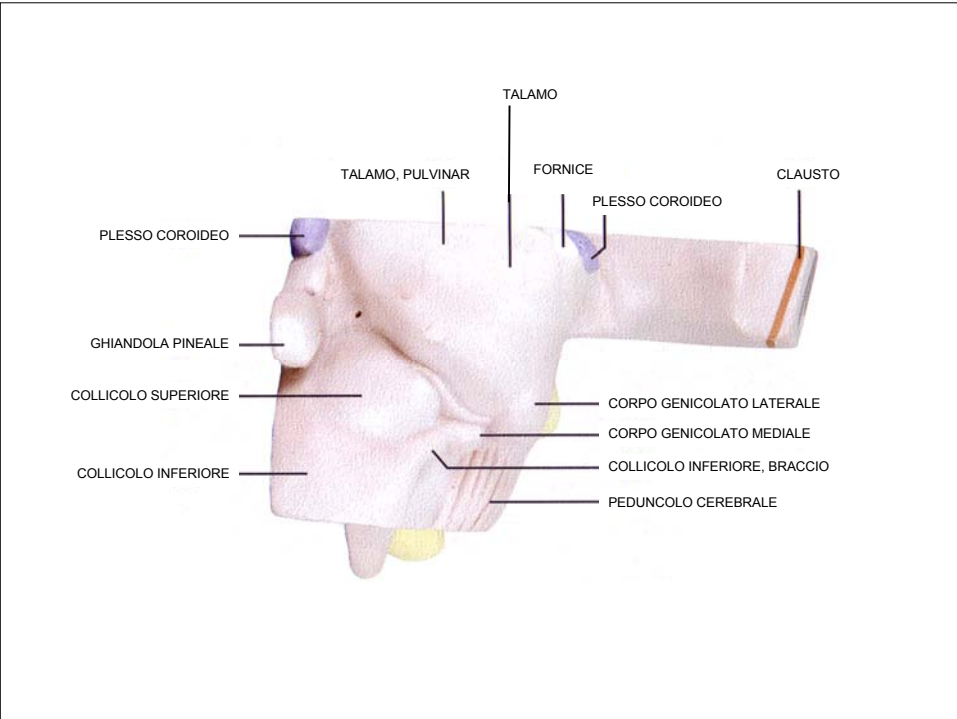
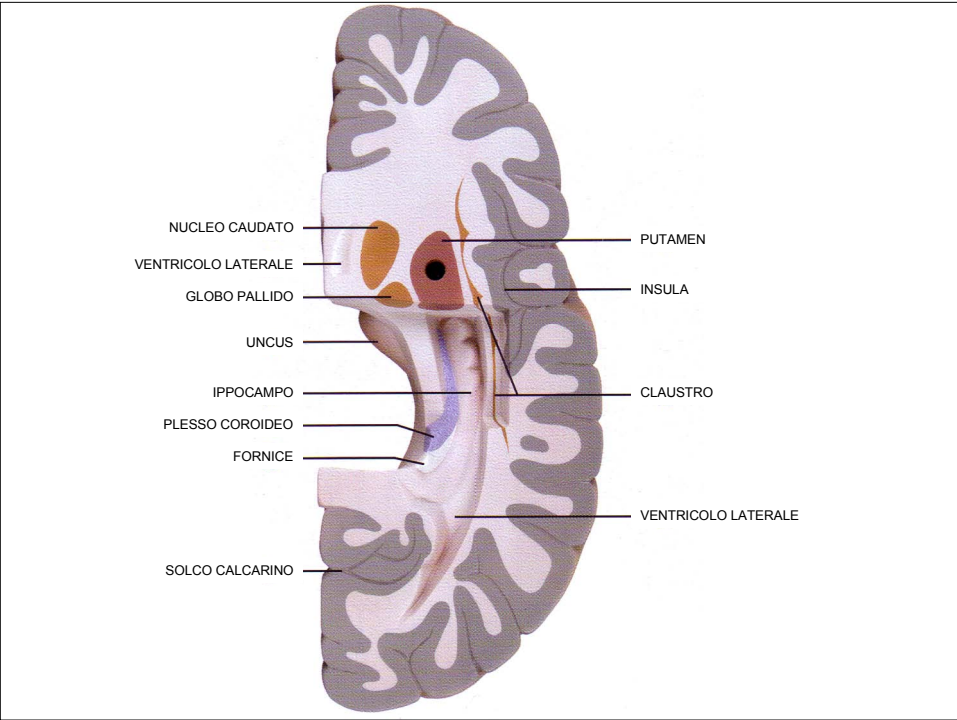


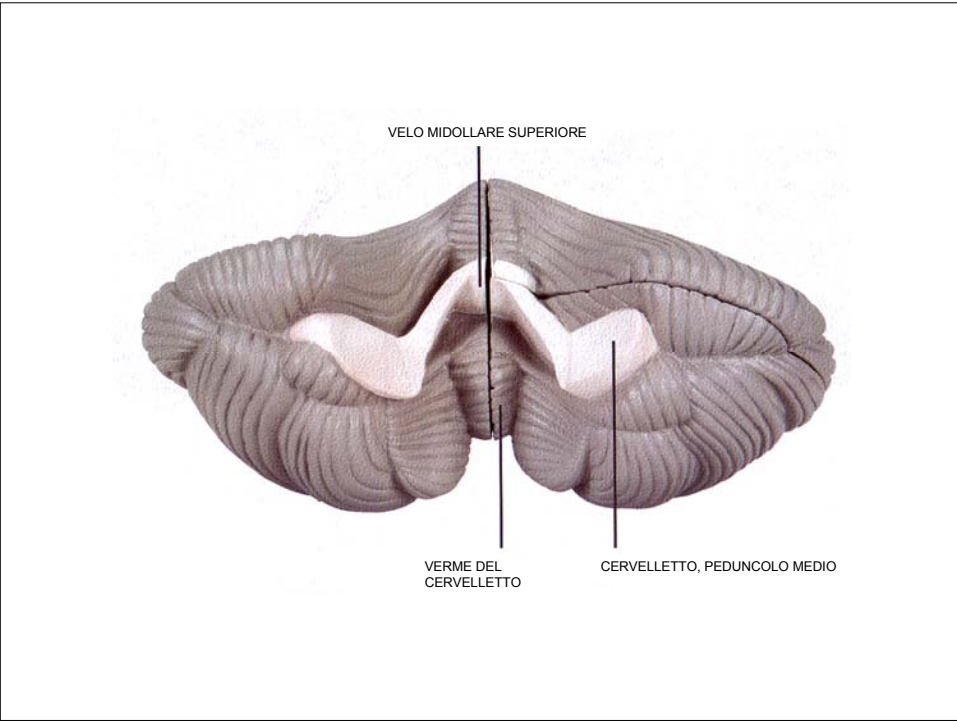
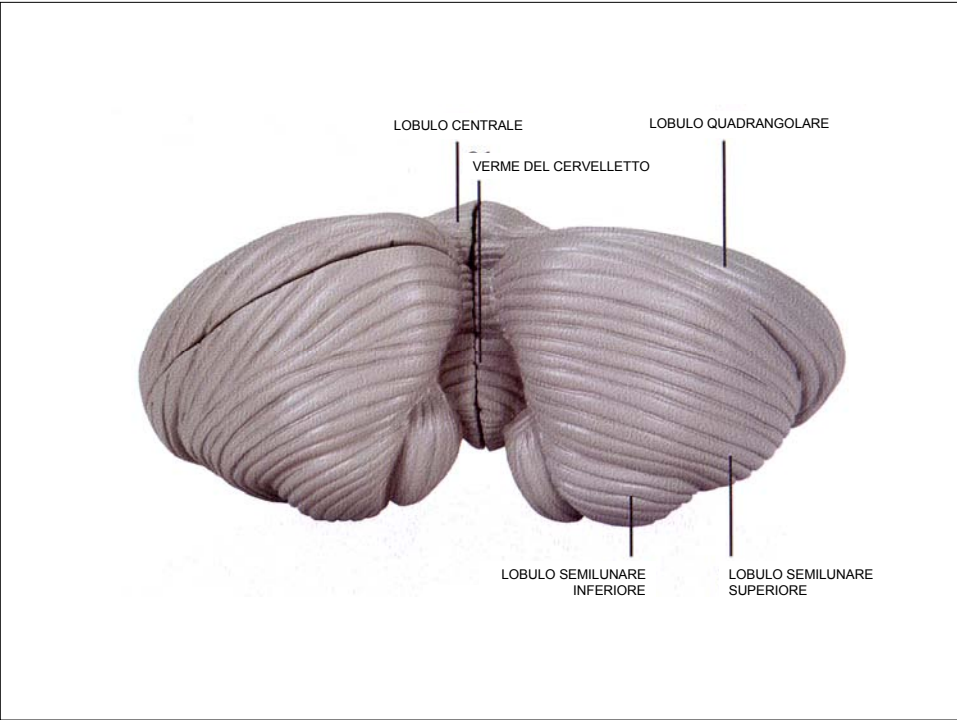


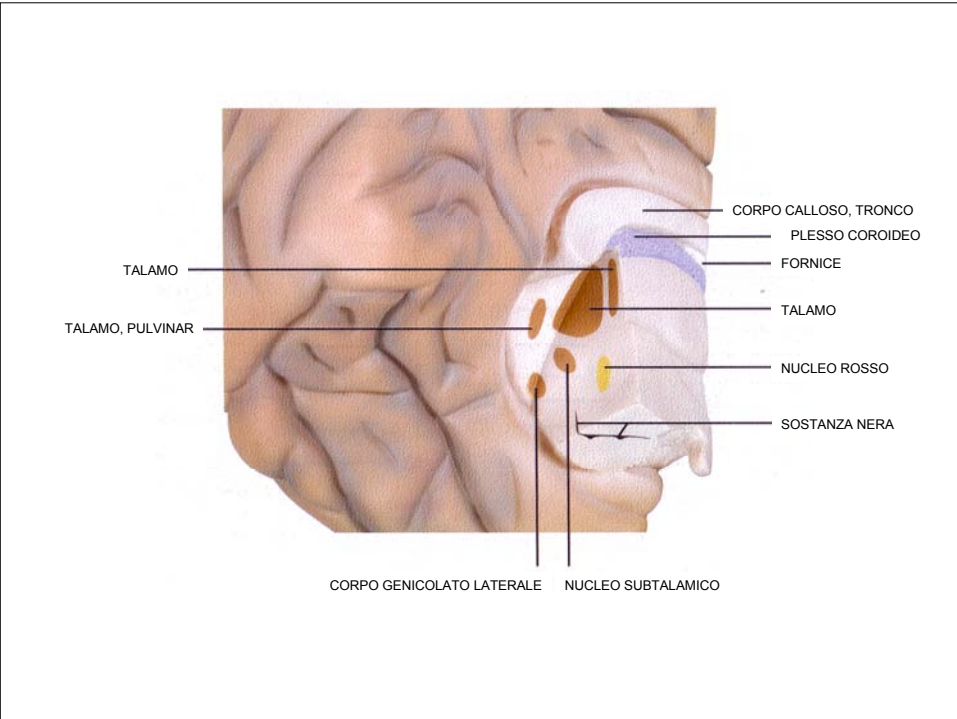
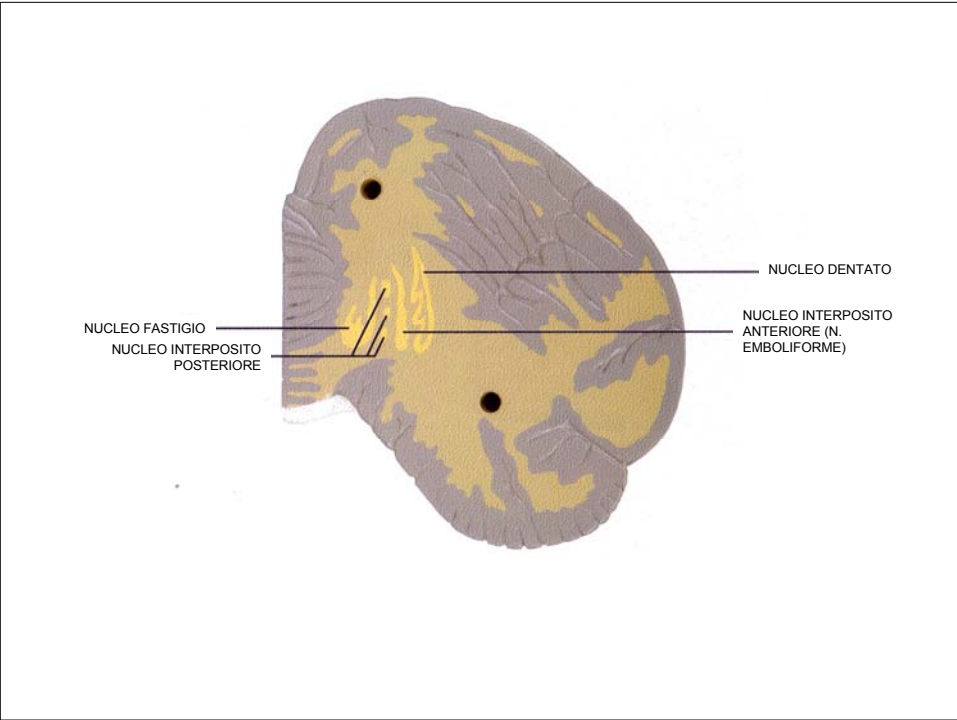


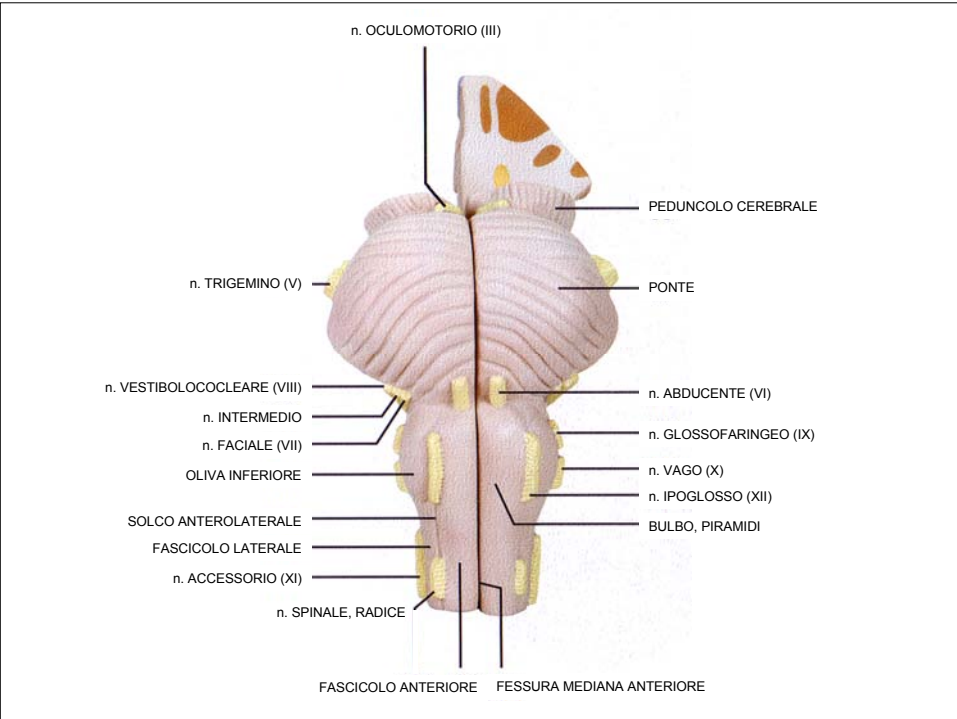
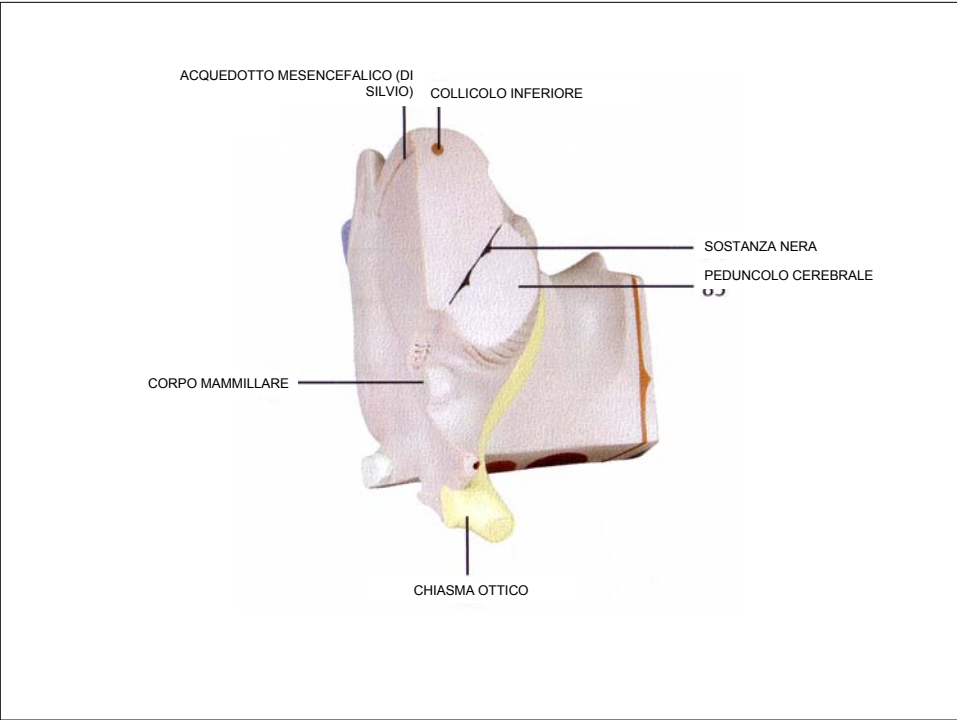


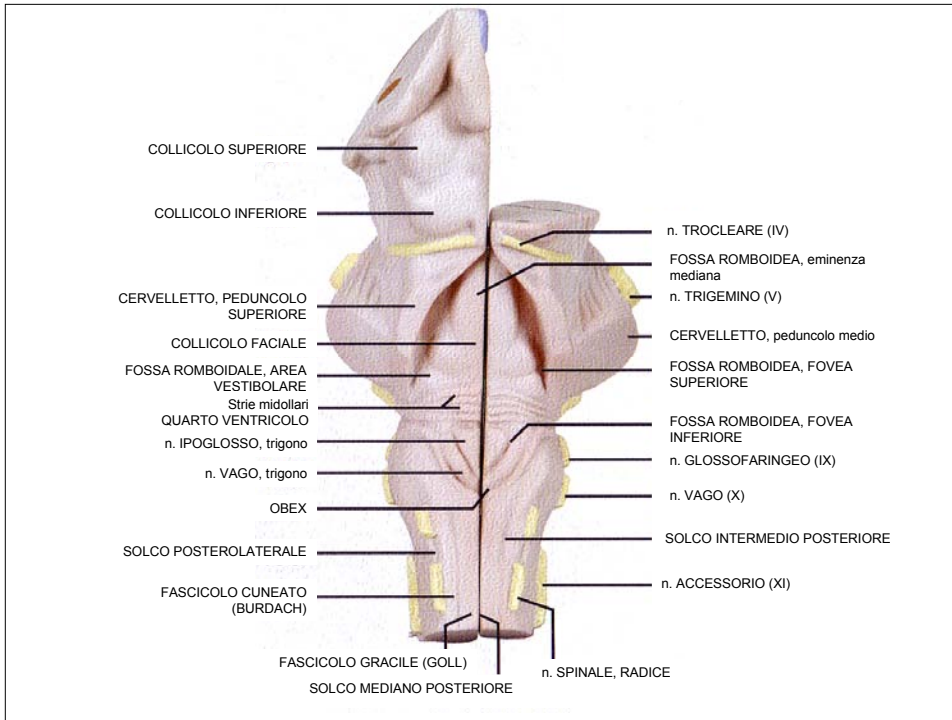












Esempio di scheda per le competizioni:

Bisogna riempire i riquadri con il nome appropriato (scheda 22)

